

Phone: 2669 0221

Prabhu Jagatbandhu College

JHOREHAT, P.O.: ANDUL-MOURI, HOWRAH-711302
BLOCK – SANKRAIL, SUB-DIVISION – HOWRAH SADAR
ESTD: 1964, (NAAC ACCREDITED)

Email: info@prabhujagatbandhucollege.edu.in, Website:
www.prabhujagatbandhucollege.edu.in

Ref. No.	PJC/	/2015
Date	26/09/2015	

Call for papers

Papers are invited in the prescribed format for an academic Journal Digonto (ISSN 2348-8441) from Humanities (Literature and Social Science) and Science Streams. The Soft copy of the papers must be sent to the email addresses **info@prabhujagatbandhucollege.edu.in**

and **sarada.mandal@prabhujagatbandhucollege.edu.in**

Hard copies of the papers must be sent to the following address:

Prabhu Jagatbandhu College Teachers' Council

Jhorehat, Andul-Mouri, Howrah; Pin : 711302

Last date of submission: 30.10.2015

Exchange: Rs. 500 for contributors (excluding Teachers' Council members of Prabhu Jagatbandhu College).

Prof. Soumitra Chakraborty
Editor, Digonto

Template and instructions are in next page.

Title of Your Paper for Digonto 2015 [14 font] (Arts and Humanities)

First Author (full first- and surname, with title, if any) [12 font]

Department or Division Name [10 font]
Company or College Name together with email address) [10 font]

Second Author [12 font]

Department or Division Name [10 font]
Company or College Name together with email address) [10 font]

ABSTRACT

This file provides a template for writing papers for the 2015 Digonto Journals on the Arts, Humanities. The conference proceedings will be published in an electronic format only. The full paper in MS-Word file shall be written in compliance with these instructions.

An abstract not exceeding 250 words should appear on the top of the first page, after the title of the paper in chapter titled "Abstract" (without chapter number), after the names of the authors and the contact information of the corresponding author. It should be an explicit summary of your presentation that states the problem, the methods used, and the major results and conclusions. It should be single-spaced in 10-point type, and Times New Roman font. The Full Paper will not exceed 2500 words, and shall be submitted in PDF with all artwork, tables, and graphs correctly inserted into the final paper. The total size of the final paper should not exceed 1.5MB.

Keywords: Up to four keywords, 10 point type, left-justified

1 INTRODUCTION

It is expected that authors will submit carefully written and proofread material. Spelling and grammatical errors, as well as language usage problems, are not acceptable in the final submission. The paper should not exceed 2500 words. It is suggested that the paper length should from 4 to 6 pages and be single-spaced in 12 point type with Times New Roman font.

Papers should be written in English, clearly describe the background of the subject, the authors work, including the methods used, and concluding discussion on the importance of the work.

2 PAPER FORMAT

The uniform outlook will help the reader to follow the proceedings. This can be obtained most easily if authors use this template file to construct their papers. Please note the following details: this template is an A4 format with 20 mm (0.8 inch) margins left, right, top and bottom. Header and footer shall be positioned 16 mm (0.65 inch) from the edge.

All text paragraphs should be single spaced, with first line intended by 10 mm (0.4 inch). Double spacing should only be used before and after headings and subheadings as shown in this example. Position and style of headings and subheadings should follow this example. No spaces should be placed between paragraphs.

2.1 Header, Footer, Page Numbering

If this template is used when writing the full paper, headers and footers will be set automatically.

2.2 Fonts

The body of your paper should use 12-point Times New Roman font. The styles available are bold, italic and underlined.

It is recommended that text in figures is not smaller than 9-point font size.

2.3 Tables and Figures

Figure captions and table headings should be sufficient to explain the figure or table without needing to refer to the text. Figures and tables not cited in the text should not be presented.

The following is the example for Table 1.

Table 1 Title of Example Table

AAA	Type X				Type Y			
	Item1	Item2	Item3	Item4	Item1	Item2	Item3	Item4
BBB	18	44	41	13	17	43	40.	10
CCC	24	60.	61	28	26	63	65	19

Tables and figures should be placed close after their first reference in the text. All figures and tables should be numbered with Arabic numerals. Table headings should be centred above the tables. Figure captions should be centred below the figures,

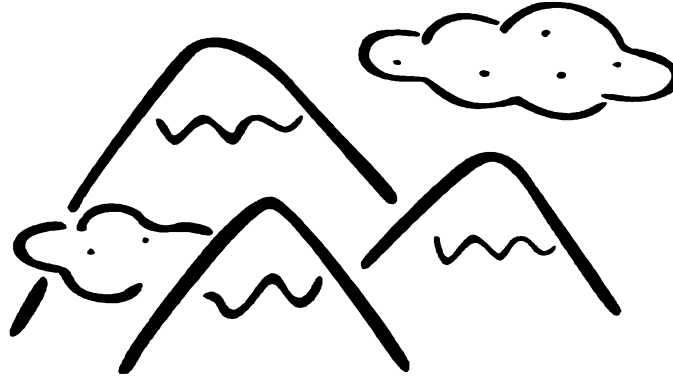


Figure 1: Caption of Example Figure

2.4 Equations

Each equation should be presented on a separate line from the text with a blank space above and below. Equations should be clear and expressions used should be explained in the text. Type all equations. Flush the body of equation to left. Equations should be numbered in parentheses. Type equation numbers in Arabic numerals in parentheses. Example:

$$x^2 + y^2 + z^2 = 1 \quad (1)$$

3 CONCLUSION

Conclusions should state concisely the most important propositions of the paper as well as the author's views of the practical implications of the results.

REFERENCES

Use 10-point Times New Roman font for the references and list references at the end of the paper in alphabetical order according to the last name of the first-named author. Include the following information (as applicable).

- [1] For a book: author(s), (year), book title, page or chapter numbers, publisher, city.
- [2] For a journal paper: author(s), (year), paper title (in quotes), journal name, volume and issue numbers, page numbers (inclusive).
- [3] For a proceedings paper or chapter in an edited book: author(s), (year), paper or chapter title (in quotes), volume title, editor(s), volume number (if applicable), publisher, city, page numbers (inclusive).
- [4] In the case of two citations, the numbers should be separated by a comma [6,7]. In the case of more than two references, the numbers should be separated by a dash [8-10].